



JAPAN
Justice

海のなんでも屋

株式会社ジャパングスティス

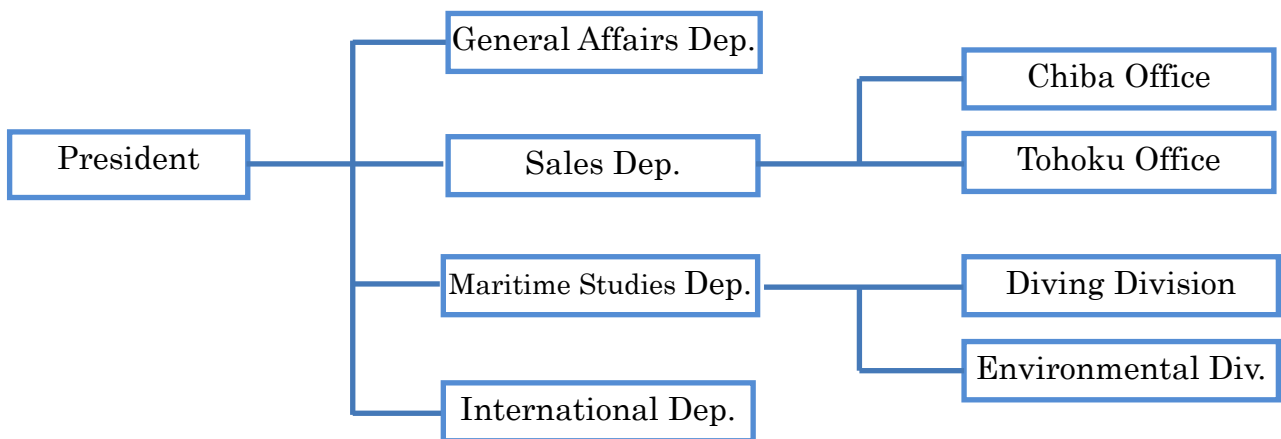
Company Profile

Company Name	Japan Justice Co. Ltd.
Foundation	June, 1999
President	Yukimasa Nakada
Capital	10 Million Yen
Offices	Head Office, Tohoku Office
Undertakings	<ul style="list-style-type: none"> •Diving •Maritime Studies •Maritime Engineering •Maritime Architecture •Construction •Machinery/Equipment installation works •Diving instruction •Diving equipments sale
Main Clients	Aichi Fisheries Research Institute, University of Tokyo, Toyohashi University of Technology, ECOH CORPORATION, NIPPON CORROSION ENGINEERING CO. LTD., Fuyo Ocean Development & Engineering Co. Ltd., Cosmo Ocean, AERO ASAHI CORPORATION, SUNCOH CONSULTANTS CO. LTD., SENC21, TAIYO KOGYO CORPORATION, Asahi-Kasei Geotech, CHUO FUKKEN CONSULTANTS CO. LTD., Crearia Incorporation
Associated Companies	Surf Shop BACK YARD

Office Address

Head Office	30-11 Nishiyashiki,Otsuka-cho, Gamagori-shi, Aichi, Japan	TEL : 0533-56-8270 FAX : 0533-56-8271
Tohoku Office	1-5-33 Fukukawa-Minami-cho, Osaki-shi, Miyagi, Japan	TEL/FAX :0229-25-1923
Nagasaki Office	352-1 Funatsu,Takaki-cho Isahaya-shi,Nagasaki,Japan	TEL/FAX :0957-32-2530
Kitakyushu Office	1-14-41 Yukawashin-machi,Koguraminami-ku, Kitakyushu-shi,Fukuoka,Japan	TEL/FAX :093-923-5825

Organization Chart



Technicians • Licensed Personnel

Divers	5
Port Divers	4
Port and Maritime Surveyor (Environmental Division)	2
Meteorologist	1
Assistant Surveyor	1
Small Ship Pilot License	7

Equipments

Type	Name of Equipment	Quantity
Self-recording Wave Height, Wave Direction and Current Speed Meter	WAVE HUNTER 08—Σ	10 units
Self-Recording Wave Height Meter	HJ-401	2 units
Electromagnetic Current Recorder	Compact-EM	2 units
Ultrasonic Thickness Gauge Model	UDM-750	3 units
Diver's Metal Detector	Pulse 8 X	1 unit
Digital Multimeter	Digital PC Checker Model 3256-50	2 unit
Grab Sampler	Vibrator	1 unit
Anemometer	KADEC21-KAZE	1 unit

Content of Activities

Wave Current Measuring Studies



Installation of Measuring Equipment



Underwater Equipment Set Up Procedures

Tracing Studies (Sand Drifting Study)



Application of Colored Sand



Application of Colored Sand (Underwater)



Sand Layer Thickness Measuring



Seabed Sediment Collection

Port Wall Steel Plate Thickness Study



Port Wall Steel Plate Thickness Measuring



Collection of Measuring Data

Port Facilities Study



Ground Visual Survey



Maritime Visual Survey



Underwater Visual Survey

Academic Study Support



Univ. of Tokyo Tsunami Damage Survey Support

Performance Record

Wave and Current Studies, Tracing Studies (FY 2010)

Activity	Survey Content
Niigata Beach Sand Stabilization Study	Wave Measurement
Toyogawa River Environmental Study	Current Measurement, Water Quality Study
Akita Port Long Cycle Wave Study	Wave Measurement
Tokyo Bay Shinkai Seabed Study	Sediment collection
Ariake Sea Longheaded Eagle Ray (<i>Aetobatus flagellum</i>) Study	Seabed Species Study
Iki Island Magnetism Study	Electromagnetic Study
Hiroshima Ota River Sediments Study	Sediment Collection
Bizan Seto Current Study	Current Measurement
Ibusuki Port Wave Study	Wave Measurement, Sand Layer Thickness, Sediment Collection
Seki River Wave and Tracing Measurement Study	Wave Measurement, Tracing Study, Sediment Collection
Matsuyama Port Wave Measurement Study	Wave Measurement

Academic Research Reports (FY 2010)

Activity	Survey Content	Client
Ise Bay Environmental Deterioration Area Measurement Equipment Set Up and Removal	Set Up and Removal of Measuring Equipment	Aichi Fisheries Research Institute
Tenryu River Current Study	Set Up and Removal of Video Equipment for Current Measurement	University of Tokyo
Sagara Coast Study	Set up and Removal of Current Measurement Equipment	Toyohashi University of Technology
Mud Flat and Shallow Bottom Areas Structure Study	Seabed Material Collection	Aichi Fisheries Research Institute
Imakiriguchi Current Study	Set up and Removal of Current Measurement Equipment	Toyohashi University of Technology
Magome River Rivermouth Current Study	Set Up and Removal of Measurement Equipment	Toyohashi University of Technology
Higashi Hazu Environmental Study	Seabed Sediment Collection	Aichi Fisheries Research Institute
Iwate Prefecture Kamaishi Port Tsunami Impact Study	Tsunami Impact Study	University of Tokyo

Port Facilities Studies, Port Wall Steel Plate Thickness Studies (FY 2010)

Activity	Survey Content
Muya Port Coast Preservation Facilities Degradation Study	Ground, Maritime and Underwater Visual Survey Anodized Aluminium Wearing Study, Core Sampling
Sashima Fisheries Port Fisheries Supply Basic Functionality Maintenance Plan Elaboration	Ground, Maritime and Underwater Visual Survey Port Wall Steel Plate Thickness Measurement, Core Sampling
Current Situation Study related to Ieshima Fisheries Port Functionality Maintenance Plan Elaboration	Ground, Maritime and Underwater Visual Survey/ Core Sampling
Uchiura Fisheries Port Functionality Maintenance Plan Elaboration	Ground, Maritime and Underwater Visual Survey/ Port Wall Steel Plate Thickness Measurement
Namibe Port Situation Study in Angola	Underwater Visual Survey
Choshi Fisheries Port Fisheries Supply Basic Functionality Maintenance Plan Elaboration	Ground, Maritime and Underwater Visual Survey Port Wall Steel Plate Thickness Measurement, Core Sampling
Oigawa Port Improvement and Maintenance Plan Elaboration	Ground, Maritime and Underwater Visual Survey/ Measuring Works
Soma National Port Situation Study	Ground, Maritime and Underwater Visual Survey/ Measuring Works
Oita Prefecture, Nagasu Fisheries Port Functionality Maintenance Plan Elaboration	Ground, Maritime and Underwater Visual Survey Port Wall Steel Plate Thickness Measurement
Takaigami Fisheries Port Fisheries Supply Basic Functionality Maintenance Plan Elaboration	Underwater Visual Survey/ Port Wall Steel Plate Thickness Measurement/ Core Sampling
Tokyo Port Tide-Control Embankment Maintenance Inspection	Ground and Maritime Visual Survey